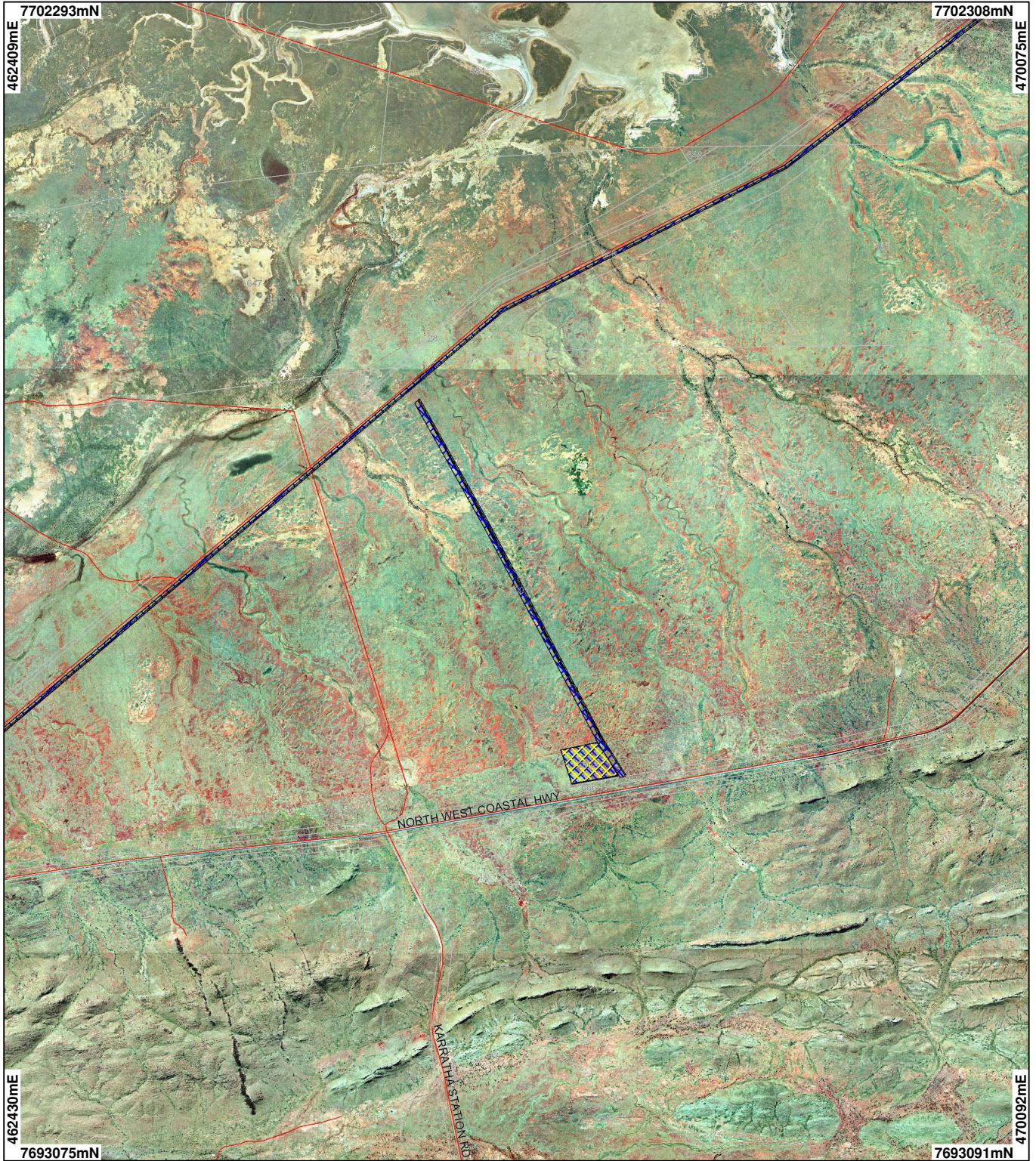


# CPS 1487 MAP



## LEGEND

Clearing Regulations - Environmentally Sensitive Areas - DOE 30/5/05

Road Centrelines - DLI 1/5/04

Towns - DLI 8/04

Cadastre - DLI CAWSA Part IIA Clearing Control Catchments - DOW

Zone A  
 Zone B  
 Zone C (cont)

Zone D  
**Clearing Instruments**

Areas Applied to Clear  
 Areas Subject to Conditions  
 Areas Approved to Clear

**Dampier 2m Orthomosaic - DOLA 00**



0 ~1.25 km

Scale 1:44270

(Approximate when reproduced at A4)

Geocentric Datum Australia 1994

Note: the data in this map have not been projected. This may result in geometric distortion or measurement inaccuracies.

..... Date .....

Officer with delegated authority under Section 20 of the Environmental Protection Act 1986

Information derived from this map should be confirmed with the data custodian acknowledged by the agency acronym in the legend.



WA Crown Copyright 2002